

*The most innovative ATS on the market*



**Intelligent, Rack Mounted,  
Automatic Transfer Switch**

## KWX-ATS1

KWX-ATS32A1H1

Remote Monitored ATS



- ✓ Monitor The Total Current
- ✓ Monitor The Input Voltage
- ✓ Monitor The Total kWh
- ✓ Power Factor Recognition
- ✓ Monitors Input & Output Voltage
- ✓ 55°C Hot Rack Operating
- ✓ SMS, SNMP & Email Notification
- ✓ Built In Environmental Monitoring Technology As Standard
- ✓ Infrared Monitoring
- ✓ Temperature & Humidity Alarm
- ✓ Water Logging Alarm
- ✓ Rack Door Open Alarm
- ✓ Smoke Alarm
- ✓ Up to 8 Plug ' n ' Play Sensors
- ✓ Blade Server Ready
- ✓ Dry Connector For Audible Alarms
- ✓ Intelligent Outlet Type & Number Recognition
- ✓ 1,4,8,10 & 16 Port Horizontal, 16A and 32A



# KWX-ATS

## Remote Monitored Automatic Transfer Switch

KWX-ATS series is our remote monitored ATS that supports multitask and multiuser access. The software supports various TCP/IP protocols, Including: HTTP, HTTPS, SSL, SNMP, TELNET, SSH, SMTP etc., to monitor the voltage, total current, the rack environment. The KWX-N2 & KWX-N4 also monitors each ports current and switch on/off per port.

### Socket Types



Reverse view of KWX-ATS32A1H1



### Dimension

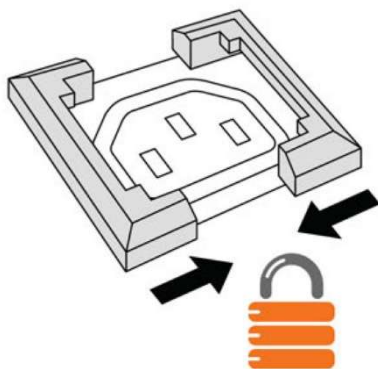
**19 " Horizontal (W x D x H) = 19" 206.9 x 44.45 mm**

| Items             |                                  | Description                         | N1 | N2 | N3 | N4 |
|-------------------|----------------------------------|-------------------------------------|----|----|----|----|
| Monitor Functions | LED Display                      | Current Load of total and per ports | ✓  | ✓  | ✓  | ✓  |
|                   |                                  | LED flashes when overload           | ✓  | ✓  | ✓  | ✓  |
|                   |                                  | PDU Address, Version Number         | ✓  | ✓  | ✓  | ✓  |
|                   | Managing software/Hyper Terminal | Total Current Load                  | ✓  | ✓  | ✓  | ✓  |
|                   |                                  | Monitors Current Load Per Ports     | ✗  | ✓  | ✗  | ✓  |
|                   |                                  | Input Voltage                       | ✓  | ✓  | ✓  | ✓  |
|                   |                                  | Max. Voltage configured             | ✓  | ✓  | ✓  | ✓  |
|                   |                                  | Max. Current configured             | ✓  | ✓  | ✓  | ✓  |
|                   |                                  | Sensors state (optional)            | ✓  | ✓  | ✓  | ✓  |
| Control Functions | PC Control                       | On/off of individual unit           | ✗  | ✗  | ✓  | ✓  |
|                   |                                  | Power On /Off time setting          | ✗  | ✗  | ✓  | ✓  |
|                   |                                  | Stay the same after restart         | ✗  | ✗  | ✓  | ✓  |
| Accessing Method  | RS 485 port                      | ✓                                   | ✓  | ✓  | ✓  |    |
| Daisy-chain ways  | Serial and radiation connection  | ✓                                   | ✓  | ✓  | ✓  |    |

## KWX-ATS32A1H1

KWX Rack mount Automatic Transfer Switch (KWX ATS) Total ATS Current Monitoring, delivers consistent power, to single-corded equipment, The KWX ATS has dual input power cords supplying power to the connected load. In the event where the primary power source becomes unavailable, the KWX ATS will flawlessly source power from the secondary source without interrupting sensitive equipment.

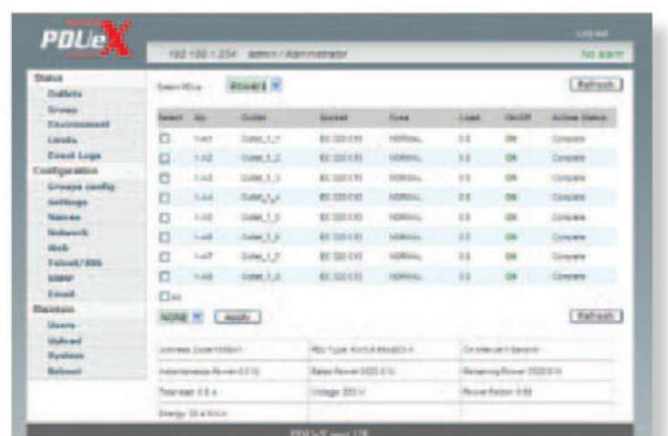
The two sources are not required to be in phase. This is an effective solution that builds in redundancy and increases the AC power availability of connected equipment. If the dual input power is fed through two independent AC sources, then the system availability is increased and the dual input advantages are fully used. KWX ATS provides remote management via Web, SNMP or Telnet/SSH interfaces, and provides sensors recognition, ability to cascade up to 4 units, power factor recognition. 1 x IEC 60309 32A (2P+E) & 2 x IEC 60309 32A Commando Inputs.



**Optional:** Temperature and humidity, smoke alarm  
Water logging alarm, infrared alarm, and door alarm.

**Monitor:** Monitor the total current, monitor the total kWh, monitor the input voltage, monitor environment Temperature, monitor environment humidity, monitor environment smoke. Monitor water logging, infrared monitoring, and door open monitoring.

**Alarm settings:** Total current over the limit, on the temperature limit, on the humidity limit, smoke alarm and water logging alarm, infrared enters alarm, door open alarm, dry connection.



**KWX PDU SENSORS**



**Infrared Sensor**



**Door Sensor**



**Temperature/  
Humidity Sensor**



**Water Logging  
Sensor**



**Smoke Sensor**